



User Guide 1.0

Summit Chairs

Cyrus

Summit Chairs. Cyrus

Content Creation Sheet

Date: 23.03.16

Revision: 1.0

Contents

Page Number	Data Sheet
0	Predefined Types
1	Chair
2	Table
3-5	User Guide

Cyrus. Chair



Predefined Types

Family Type	Width	Depth	Height
Chair Without Arms	570	640	890
Chair With Left Arm	610	640	890
Chair With Right Arm	610	640	890
Chair With Arms	650	640	890
Two Seater Chair	1160	640	890

Material Options

Range
of
Fabric

Chair Fabric

Cyrus. Table



Predefined Types

Family Type	Width	Depth	Height
Square Table	550	550	350
Rectangular Table	1100	550	350

Material Options



Beech

Top Finish

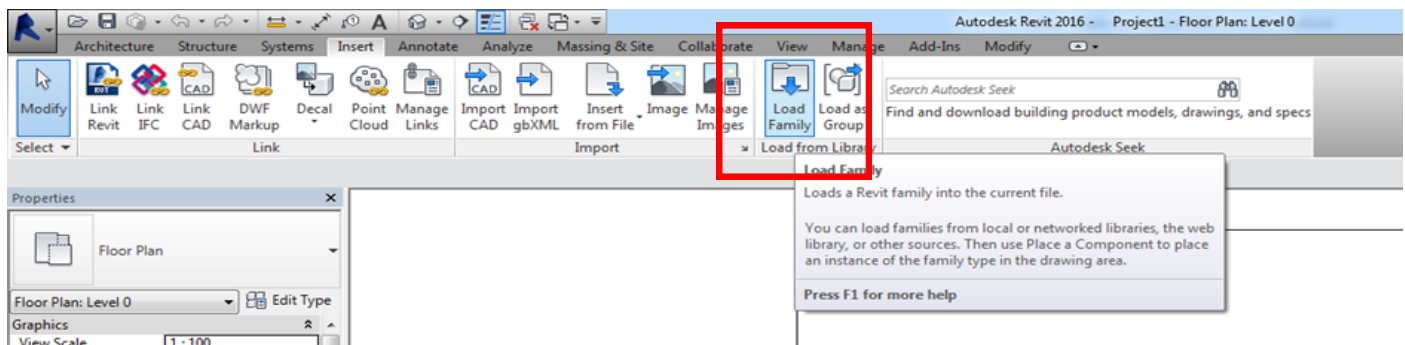
Cyrus. Your Revit Guide

A simple guide to using Summit Chairs Revit Ready files.

1. LOAD IT

The Cyrus range consists of 2 Revit Families, this contains predefined types as outlined above in the predefined types and the manufactures brochure.

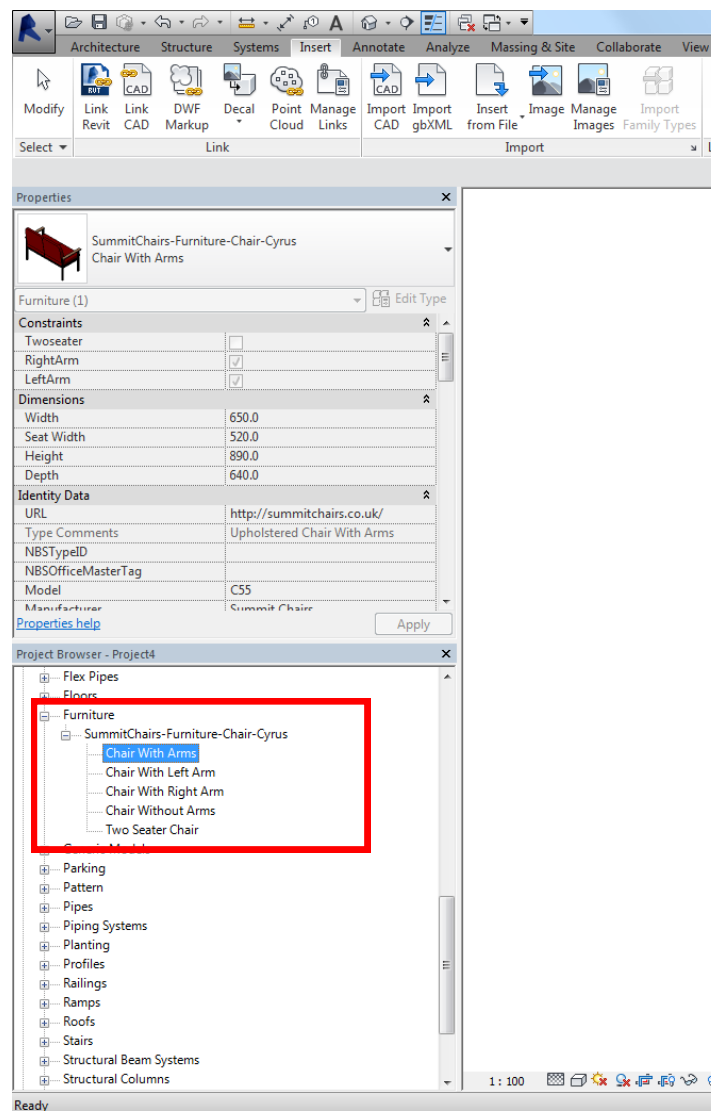
After downloading and saving the file to a suitable location go to 'Insert Tab/Load Family...'



Cyrus. Your Revit Guide

2. USE IT

Once your family is loaded in, it will be located in the 'Project Browser/Families/Furniture' tab. Types are named in a way to ensure ease of selection. Click and drag your chosen item into your floor plan.



Cyrus. Your Revit Guide

3. CUSTOMISE IT

Once an item is selected it will turn blue, the properties panel will then display the parameters available. Here you will be able to make changes to the finishes. All material options will load in with the family, click the 'materials and finishes' parameter to view.

Please note— The fabric type will determine the fire rating. Please complete 'FireRating' Parameter once selection has been made.

