



User Guide 1.0
Summit Chairs
Farringdon

Summit Chairs. Farringdon

Content Creation Sheet

Date: 23.03.16

Revision: 1.0

Contents

Page Number	Data Sheet
0	Predefined Types
1	Straight Sofa
2	Corner Sofa
3	Upholstered Table
4	Glass Table
5-7	User Guide

Farringdon. Straight Sofa



Predefined Types

Family Type	Width	Depth	Height
Single Armchair	770	610	740
Single Chair	610	610	740
Single Chair with Right Arm	690	610	740
Single Chair with Left Arm	690	610	740

Material Options

Range
of
Fabric

Chair Fabric

Farringdon. Corner Sofa



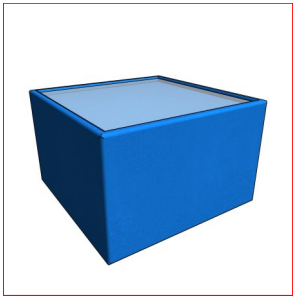
Predefined Types

Family Type	Width	Depth	Height
Corner	610	610	740

Material Options

Range of Fabric	Chair Fabric
-----------------	--------------

Farringdon. Upholstered Table



Predefined Types

Family Type	Width	Depth	Height
Table	610	610	390

Material Options

Range of Fabric	Base Fabric
Glass	Top Finish

Farringdon. Glass Table



Predefined Types

Family Type	Width	Depth	Height
500 x 500	500	500	340
900 x 500	900	500	340

Material Options



Top Finish

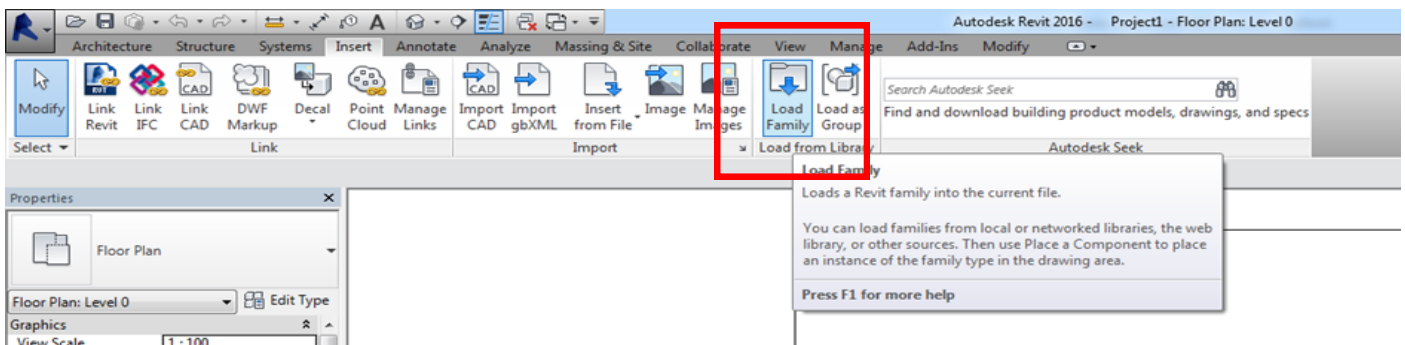
Farrington. Your Revit Guide

A simple guide to using Summit Chairs Revit Ready files.

1. LOAD IT

The Farrington range consists of 4 Revit Families, this contains predefined types as outlined above in the predefined types and the manufactures brochure.

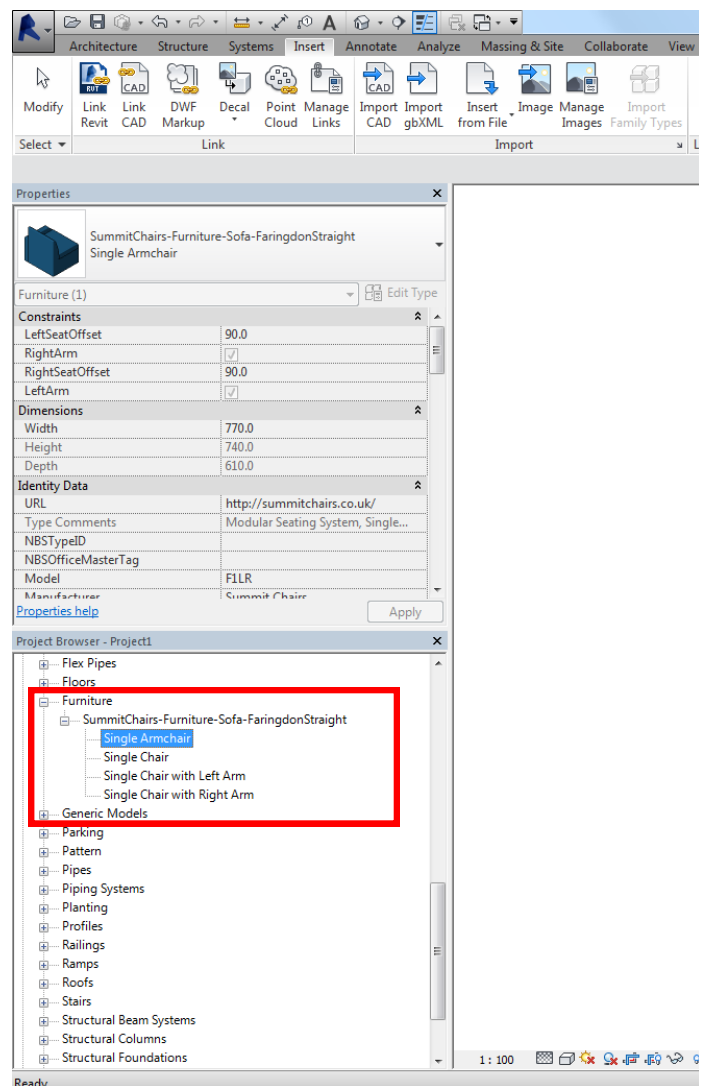
After downloading and saving the file to a suitable location go to 'Insert Tab/Load Family...'



Farringdon. Your Revit Guide

2. USE IT

Once your family is loaded in, it will be located in the 'Project Browser/Families/Furniture' tab. Types are named in a way to ensure ease of selection. Click and drag your chosen item into your floor plan.



Farringdon. Your Revit Guide

3. CUSTOMISE IT

Once an item is selected it will turn blue, the properties panel will then display the parameters available. Here you will be able to make changes to the finishes. All material options will load in with the family, click the 'materials and finishes' parameter to view.

Please note— The fabric type will determine the fire rating. Please complete 'FireRating' Parameter once selection has been made.

