



User Guide 1.0

Summit Chairs

Graphic

Summit Chairs. Graphic

Content Creation Sheet

Date: 23.03.16

Revision: 1.0

Contents

Page Number	Data Sheet
0	Predefined Types
1	Sofa
2	Bench
3	Table
4-6	User Guide

Graphic. Sofa



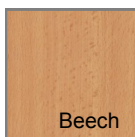
Predefined Types

Family Type	Width	Depth	Height
Single Armchair	1020	780	800
Single Armchair Individually Cushioned Back	1020	780	880
Two Seater Armchair	1660	780	800
Two Seater Individually Cushioned Back	1660	780	880
Three Seater Armchair	2140	780	800
Three Seater Individually Cushioned Back	2140	780	880

Material Options



Chrome



Beech

Leg Finish



Range
of
Fabric

Back Fabric



Range
of
Fabric

Seat Fabric

Graphic. Bench



Predefined Types

Family Type	Width	Depth	Height
Single Bench	670	770	440
Double Bench	1340	770	440

Material Options



Chrome



Beech

Leg Finish



Range
of
Fabric

Seat Fabric

Graphic. Table



Predefined Types

Family Type	Width	Depth	Height
Table	700	700	400

Material Options



Chrome



Beech

Leg Finish



Range
of
Fabric

Base Fabric

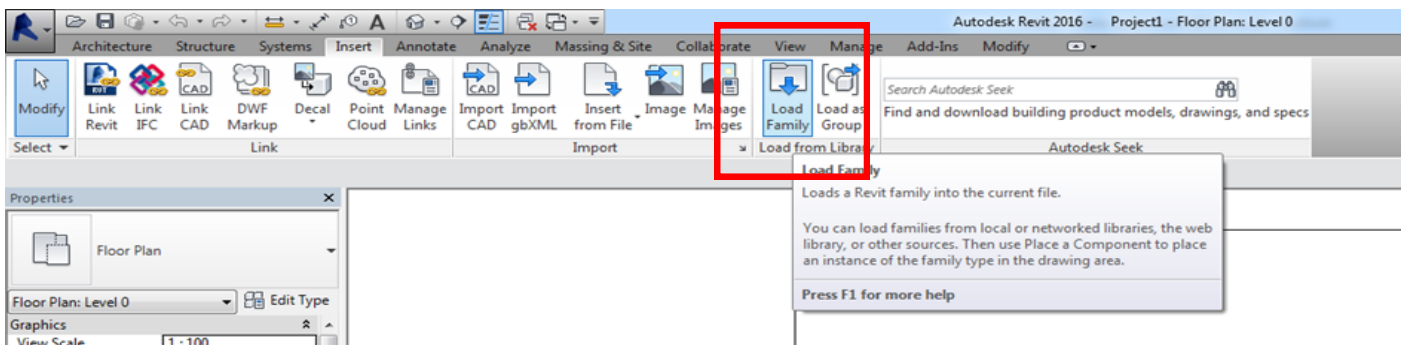
Graphic. Your Revit Guide

A simple guide to using Summit Chairs Revit Ready files.

1. LOAD IT

The Graphic range consists of 3 Revit Families, this contains predefined types as outlined above in the predefined types and the manufactures brochure.

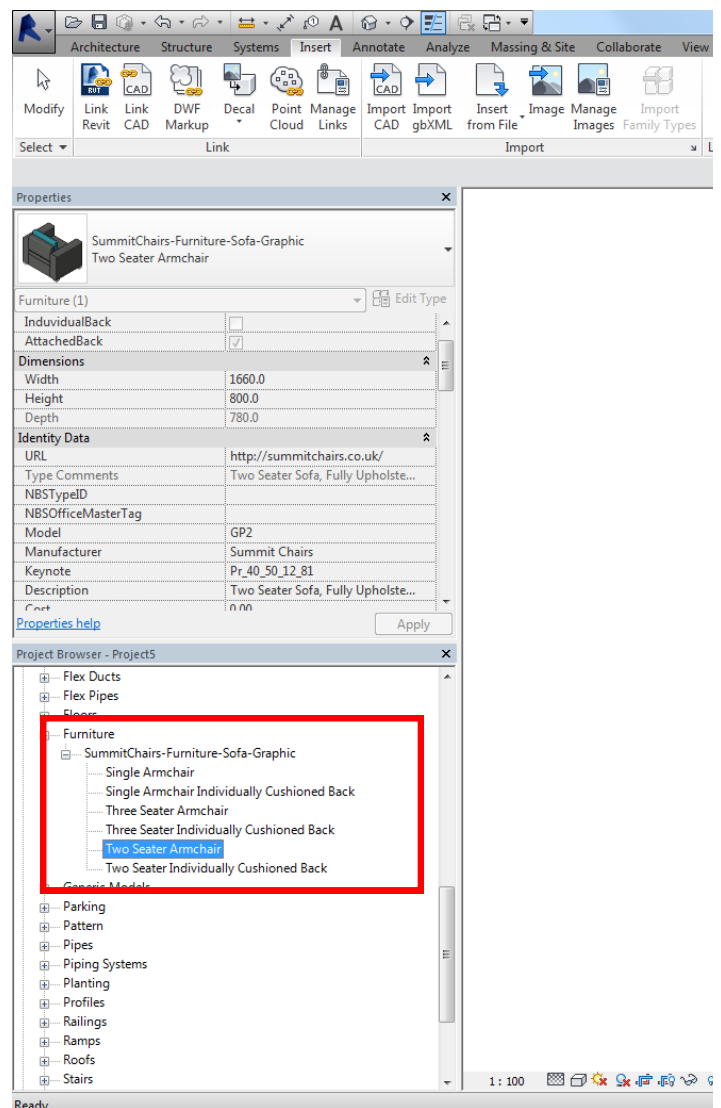
After downloading and saving the file to a suitable location go to 'Insert Tab/Load Family...'



Graphic. Your Revit Guide

2. USE IT

Once your family is loaded in, it will be located in the 'Project Browser/Families/Furniture' tab. Types are named in a way to ensure ease of selection. Click and drag your chosen item into your floor plan.



Graphic. Your Revit Guide

3. CUSTOMISE IT

Once an item is selected it will turn blue, the properties panel will then display the parameters available. Here you will be able to make changes to the finishes. All material options will load in with the family, click the 'materials and finishes' parameter to view.

Please note— The fabric type will determine the fire rating. Please complete 'FireRating' Parameter once selection has been made.

