



User Guide 1.0  
Summit Chairs  
SC506

# Summit Chairs. SC506

Content Creation Sheet

Date: 27.04.16

Revision: 1.0

## Contents

---

Page Number	Data Sheet
0	Predefined Types
1	Office Chair
2-4	User Guide

# SC506. Office Chair



## Predefined Types

Family Type	Width	Depth	Height
Task Chair With Operator Mechanism	510	640	1100
Task Chair Operator Mechanism and Curved Arms	670	640	1100
Task Chair Operator Mechanism and Straight Arms	590	640	1100
Task Chair Operator Plus	510	640	1100
Task Chair Operator Plus and Curved Arms	670	640	1100
Task Chair Operator Plus and Straight Arms	590	640	1100
Visitors Cantilever Chair	540	640	970
Visitors Cantilever Chair With Curved Arms	590	640	970
Visitors Cantilever Chair With Straight Arms	620	640	970

## Material Options



Black



Aluminium

Base Finish

Range  
of  
Fabric

Chair Fabric

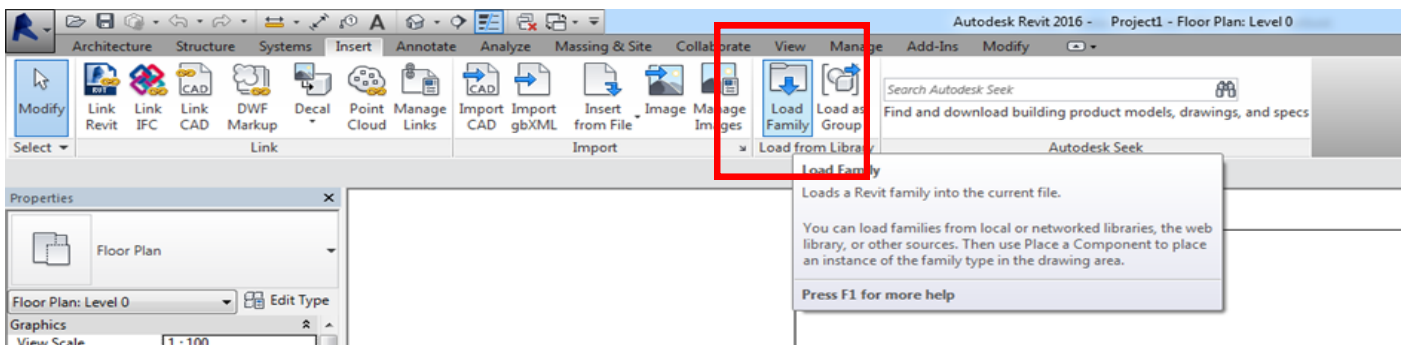
# SC506. Your Revit Guide

*A simple guide to using Summit Chairs Revit Ready files.*

## 1. LOAD IT

The SC506 range consists of 1 Revit Families, this contains predefined types as outlined above in the predefined types and the manufactures brochure.

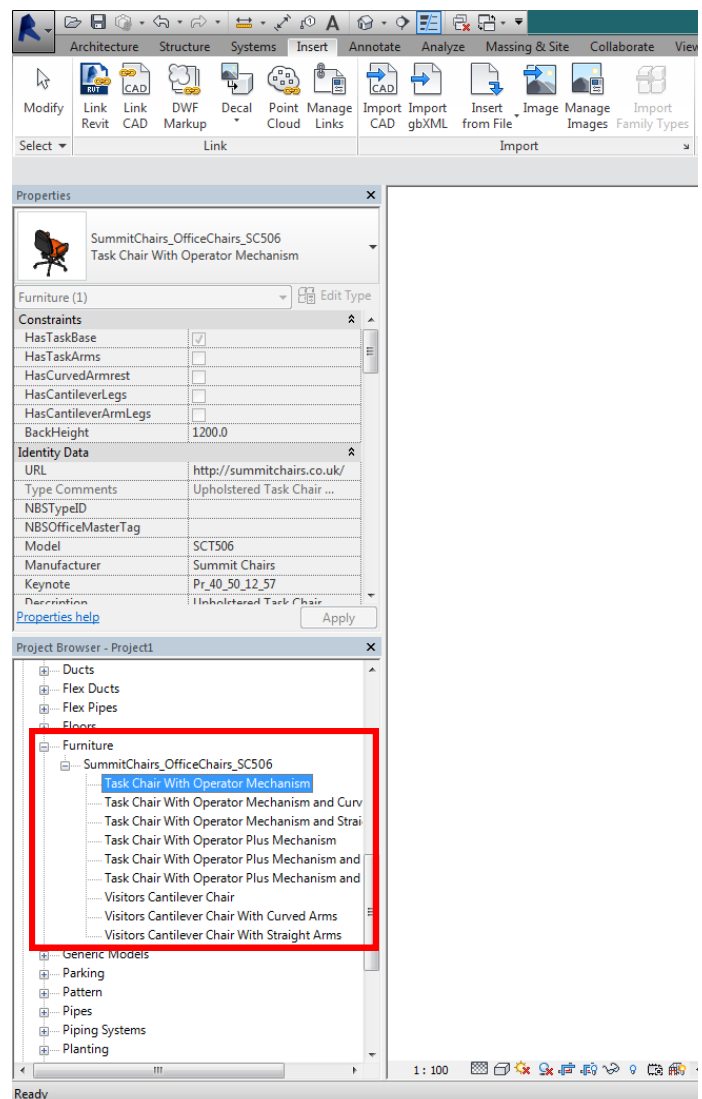
After downloading and saving the file to a suitable location go to 'Insert Tab/Load Family...'



# SC506. Your Revit Guide

## 2. USE IT

Once your family is loaded in, it will be located in the 'Project Browser/Families/Furniture' tab. Types are named in a way to ensure ease of selection. Click and drag your chosen item into your floor plan.



# SC506. Your Revit Guide

## 3. CUSTOMISE IT

Once an item is selected it will turn blue, the properties panel will then display the parameters available. Here you will be able to make changes to the finishes. All material options will load in with the family, click the 'materials and finishes' parameter to view.

Please note— The fabric type will determine the fire rating. Please complete 'FireRating' Parameter once selection has been made.

