



User Guide 1.0

Summit Chairs

Skolar

Summit Chairs. Skolar

Content Creation Sheet

Date: 22.04.16

Revision: 1.0

Contents

Page Number	Data Sheet
0	Predefined Types
1	Chair With Upholstered Back
2	Chair With Plastic Back
3	Stackable Chair
4	Bench Straight Frame
5	Bench Corner Frame
6	Chair With Frame
7	Stool Without Legs
8	Stool With Legs
9-11	User Guide

Skolar. Chair with Upholstered Back



Predefined Types

Family Type	Width	Depth	Height
Gas Lift	460	430	810—920
Manual Lift	460	430	890—980

Material Options

Range
of
Fabric

Chair Upholstery Finish

Skolar. Chair with Plastic Back



Predefined Types

Family Type	Width	Depth	Height
Gas Lift	450	450	770—880
Manual Lift	450	450	850—940

Material Options

Range
of
Fabric

Chair Upholstery Finish

Skolar. Stackable Chair



Predefined Types

Family Type	Width	Depth	Height
Stackable	490	600	850

Material Options

Range
of
Fabric

Chair Upholstery Finish

Skolar. Bench with Straight Frame



Predefined Types

Family Type	Width	Depth	Height
550mm x 550mm x 410mm	550	550	410
420mm x 320mm x 320mm	420	320	320
1040mm x 320mm x 320mm	1040	320	320

Material Options

Range
of
Fabric

Bench Upholstery Finish

Powder
coat

Platinum
Frame

Leg Finish

Skolar. Bench with Corner Frame



Predefined Types

Family Type	Width	Depth	Height
320mm Seat Height	580	358	320
410mm Seat Height	800	560	410

Material Options

Range
of
Fabric

Bench Upholstery Finish

Powder
coat

Platinum
Frame

Leg Finish

Skolar. Chair with Frame



Predefined Types

Family Type	Width	Depth	Height
Small Chair	320	350	590

Material Options

Range
of
Fabric

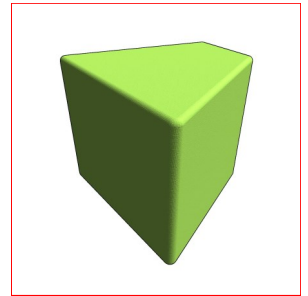
Bench Upholstery Finish

Powder
coat

Platinum
Frame

Leg Finish

Skolar. Stool Without Legs



Predefined Types

Family Type	Width	Depth	Height
Cube	480	480	480
Rectangle	960	480	480
Trapezoid	570	480	480
Cylinder	480	480	480

Material Options

Range
of
Fabric

Bench Upholstery Finish

Skolar. Stool With Legs



Predefined Types

Family Type	Width	Depth	Height
Circular Stool	690	690	480
Circular Stool with 1 Cut-out	690	610	480
Circular Stool with 2 Cut-outs	690	560	480
Square Stool	690	690	480

Material Options

Range
of
Fabric

Bench Upholstery Finish

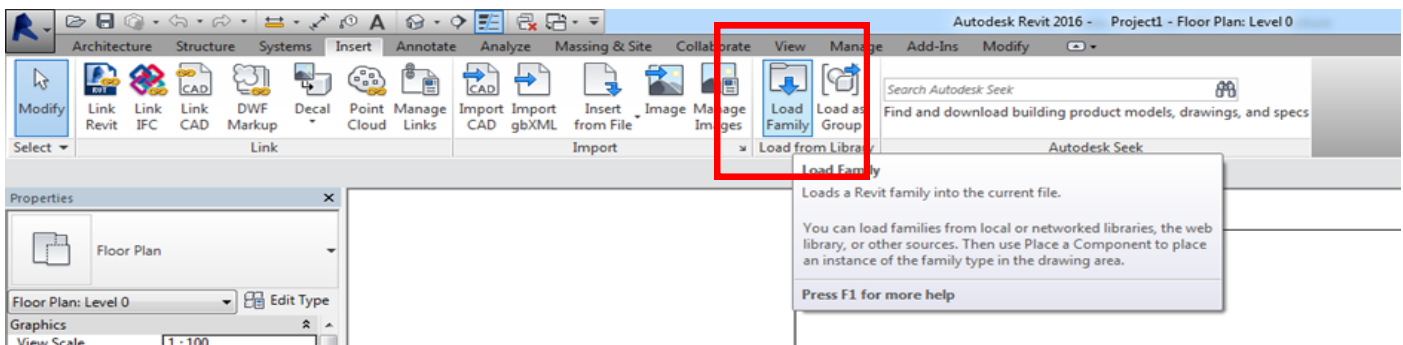
Skolar. Your Revit Guide

A simple guide to using Summit Chairs Revit Ready files.

1. LOAD IT

The Skolar range consists of 8 Revit Families, this contains predefined types as outlined above in the predefined types and the manufactures brochure.

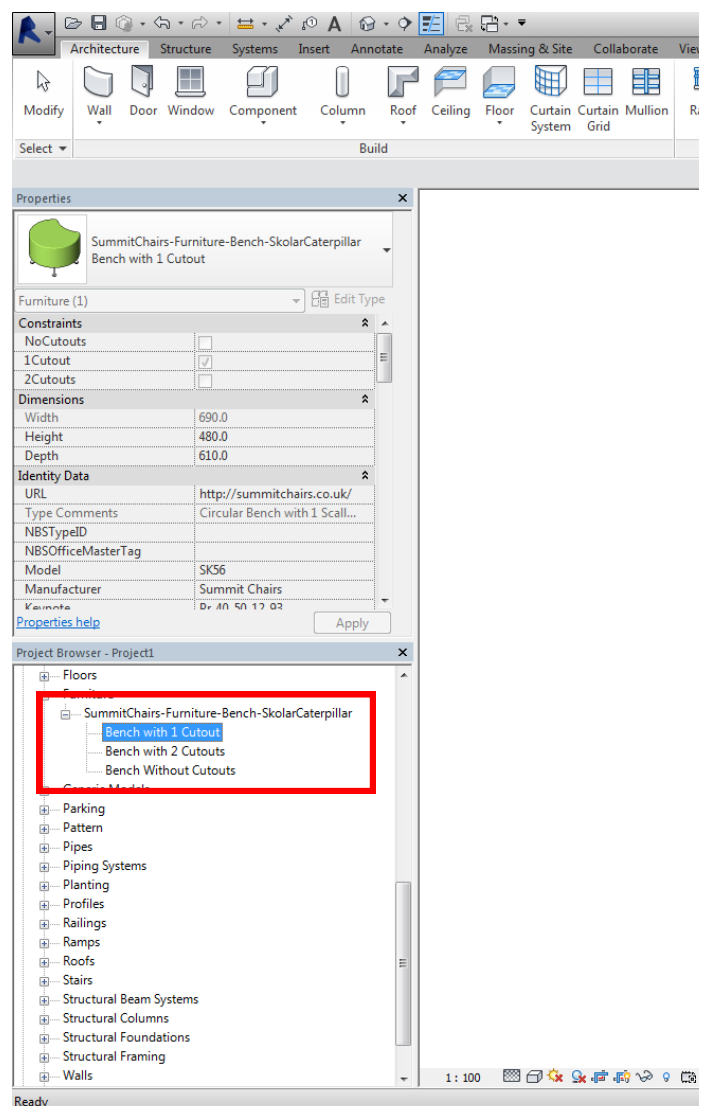
After downloading and saving the file to a suitable location go to 'Insert Tab/Load Family...'



Skolar. Your Revit Guide

2. USE IT

Once your family is loaded in, it will be located in the 'Project Browser/Families/Furniture' tab. Types are named in a way to ensure ease of selection. Click and drag your chosen item into your floor plan.



Skolar. Your Revit Guide

3. CUSTOMISE IT

Once an item is selected it will turn blue, the properties panel will then display the parameters available. Here you will be able to make changes to the finishes. All material options will load in with the family, click the 'materials and finishes' parameter to view.

Please note— The fabric type will determine the fire rating. Please complete 'FireRating' Parameter once selection has been made.

