



User Guide 1.0

Summit Chairs

Westwood

Summit Chairs. Westwood

Content Creation Sheet

Date: 23.03.16

Revision: 1.0

Contents

Page Number	Data Sheet
0	Predefined Types
1	Stackable
2	Reception
3-5	User Guide

Westwood. Stackable



Predefined Types

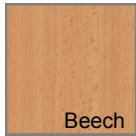
Family Type	Width	Depth	Height
Stackable With Arms	550	625	825
Stackable Without Arms	550	625	825

Material Options



Range
of
Fabric

Chair Fabric



Beech

Wood Finish

Westwood. Reception



Predefined Types

Family Type	Width	Depth	Height
Low Back Without Arms	570	640	890
Low back With Arms	570	640	890
High Back Without Arms	570	640	980
High Back With Arms	570	640	980

Material Options

Range
of
Fabric

Chair Fabric

Beech

Wood Finish

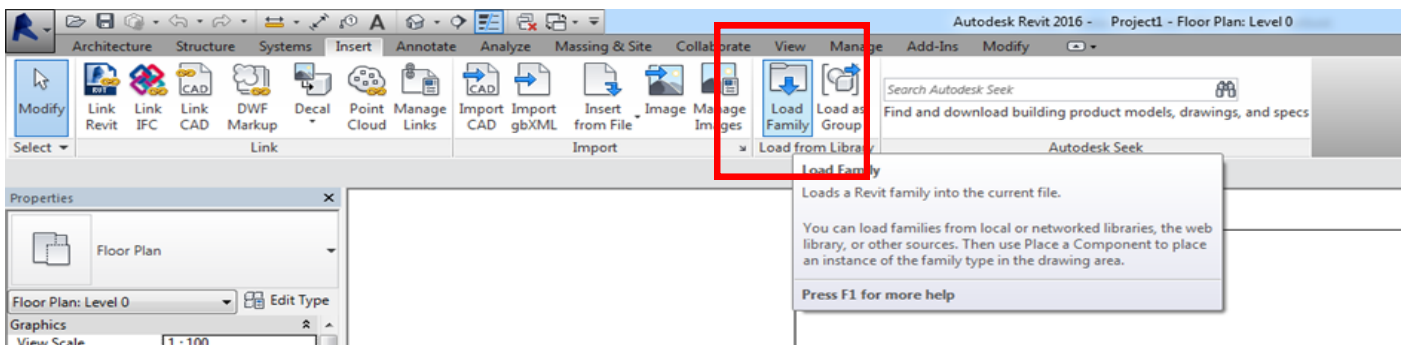
Westwood. Your Revit Guide

A simple guide to using Summit Chairs Revit Ready files.

1. LOAD IT

The Westwood range consists of 2 Revit Families, this contains predefined types as outlined above in the predefined types and the manufactures brochure.

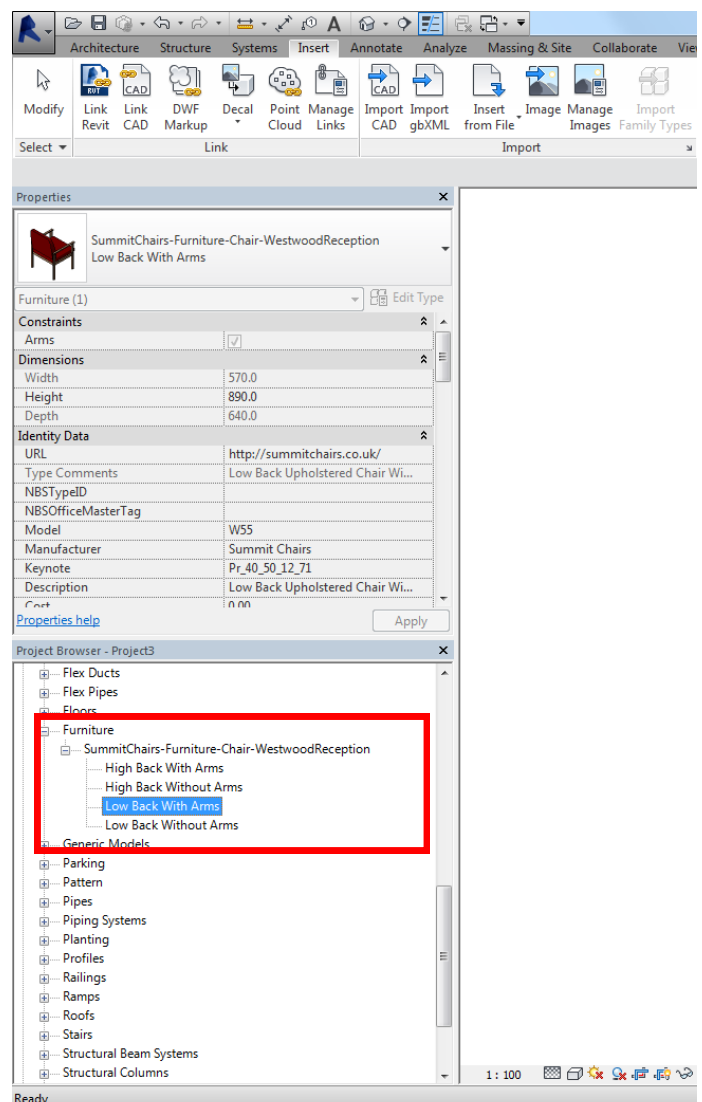
After downloading and saving the file to a suitable location go to 'Insert Tab/Load Family...'



Westwood. Your Revit Guide

2. USE IT

Once your family is loaded in, it will be located in the 'Project Browser/Families/Furniture' tab. Types are named in a way to ensure ease of selection. Click and drag your chosen item into your floor plan.



Westwood. Your Revit Guide

3. CUSTOMISE IT

Once an item is selected it will turn blue, the properties panel will then display the parameters available. Here you will be able to make changes to the finishes. All material options will load in with the family, click the 'materials and finishes' parameter to view.

Please note— The fabric type will determine the fire rating. Please complete 'FireRating' Parameter once selection has been made.

